

# Wonderware Skelta BPM Software



How do Enterprises thrive in today's business climate? Wonderware Skelta BPM helps organizations stay agile and profitable with its full cycle business process management and advanced workflow solution. Through its powerful functionality and model driven framework, Wonderware Skelta BPM ensures rapid turnaround, lower development costs and collaboration across the Enterprise.

## An Overview

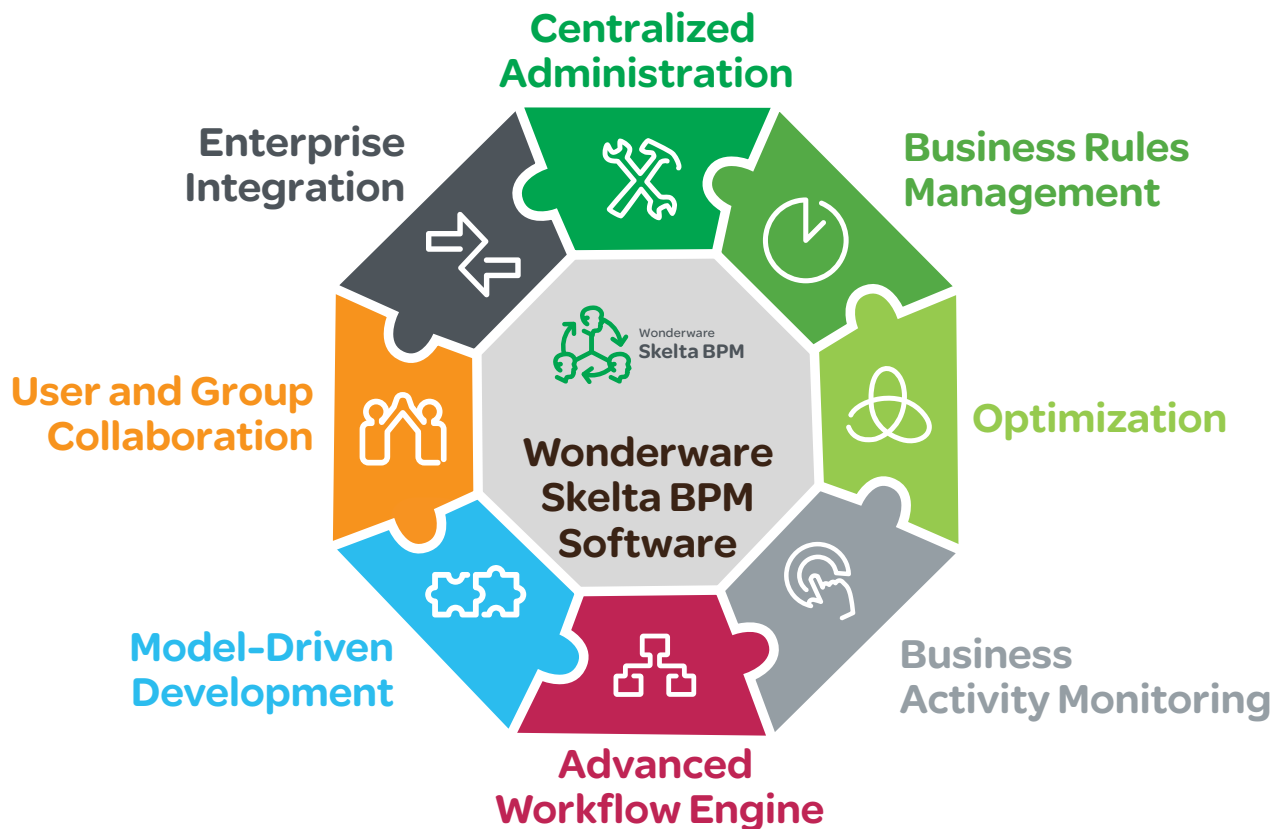
Wonderware® Skelta® BPM software delivers advanced workflow solutions and a complete set of tools for creating, executing, and optimizing business processes. 100% embeddable web-based architecture and strong integration capabilities ensures collaboration throughout the Enterprise.

Wonderware Skelta BPM helps organizations get work done intelligently, effectively and in a governed manner. The software uses an intuitive, visual process and forms modeling environment for improved productivity and rapid delivery of new business applications.

Wonderware Skelta BPM enables true enterprise collaboration with extensibility to SharePoint® and integration with Microsoft® technologies.

The product is built on cutting-edge Microsoft.NET®, XML, and Web services technologies. It is also the world's first 100% embeddable workflow engine.

Wonderware Skelta BPM Software leverages its strong enterprise class BPM architecture to deliver powerful new functionality in core BPM functions. New features include a powerful adaptive, responsive Forms Designer, SharePoint 2013 Connector, enhanced security and key technology upgrades. Wonderware Skelta BPM also supports model driven development across the Enterprise, significantly reducing development costs and enabling Innovation.



## Key Features

### Enterprise Process Management

- Enterprise Console for centralized process management
  - Improved User Experience based on HTML 5 standards
- Categorize processes
- Process repository
- Process integration

### Discovery, Analysis and Design

- Visual Process Designer
  - 100% web-based

### Wonderware Skelta BPM Forms Designer

The new Forms Designer is a “what you see is what you get” (WYSIWYG) web-based design tool to create complex layouts with smart controls

- Design friendly canvas with direct drop, better scroll, and device previews
- Web based forms to easily create complex User Interfaces
- Responsive design and cross browser compatibility
- Integration with lists and workflows to enable rapid deployment of business applications
- Unified user experience across all devices with an Adaptive layout
- Manage versioning and security of forms
- Use forms for implementing image assisted, paperless processes

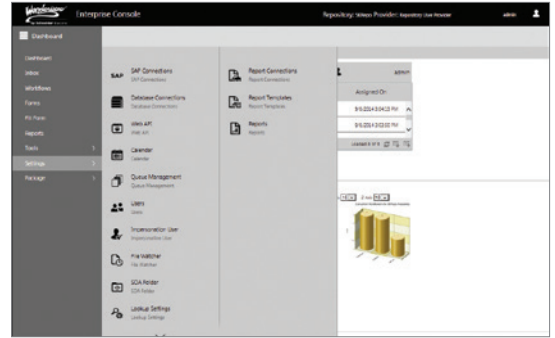
### Implementation and Development

Model driven development framework

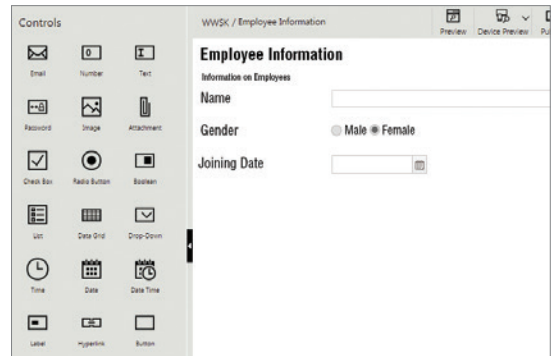
- 100% embeddable workflow framework for rapid integration
- XML Variable user interface
- Human Workflow Services
- Native integration with Microsoft Outlook
- Multi-level organization and resource calendars
- Native clustering and active-active load balancing

### Collaboration and Communication

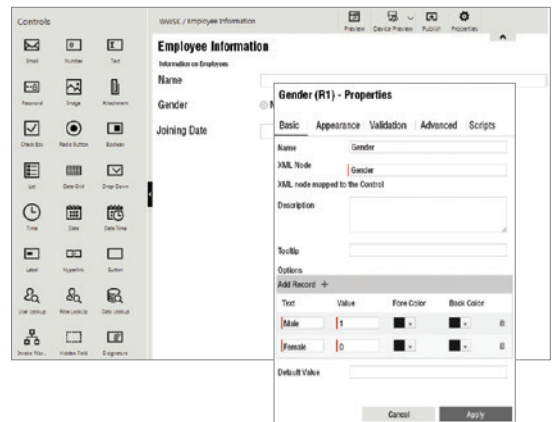
- Integration with SharePoint DB, Active Directory and third-party directories
- Delivers tasks to SharePoint lists
- Advanced queue management for flexibility in setup, task allocation and management to achieve optimum utilization of resources



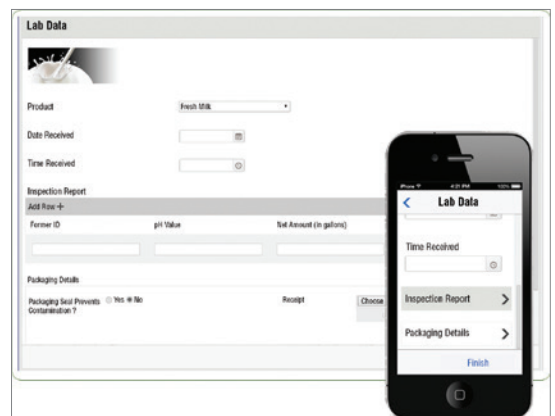
Enterprise Console



Forms Designer



Forms Designer



Responsive Design

- Multi-level, hierarchical calendars for collaboration between users across time zones, geographical locations, regions, departments and functions
- Microsoft Outlook integration for task delivery and response
- Multi-channel task delivery – Phone, SMS, PDA, Web, Mail, Voice and IM

### SAP Integration

- No code integration with SAP for business processes
- Integrate with any module of SAP using RFCs
- Built on top of Microsoft LOB adapter
- Business users can build workflows for SAP
- Read tables / data from SAP system by calling BAPIs/RFCs
- Update/push data in SAP system by calling BAPIs/RFCs

### SOA (Wonderware Skelta BPM Object Access Layer)

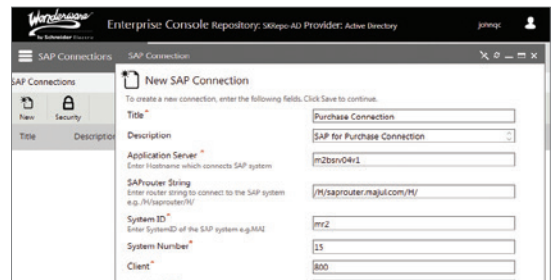
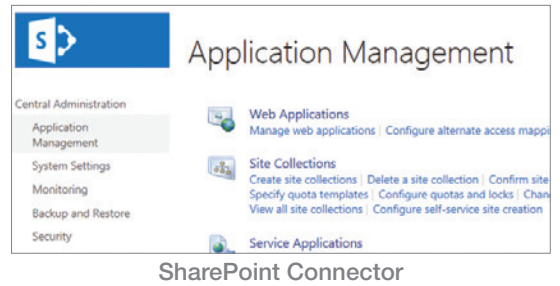
- Reuse existing objects within processes
- Access objects without writing wrappers or custom code
- Enables just-in-time activation of objects within processes
- Access from GAC (Global Assembly Cache) or local folder
- Highly secure and rights-based calling of external .NET assemblies
- Consume external .NET assemblies in Process Designer without creating a custom activity

### Business Activity Monitoring (BAM)

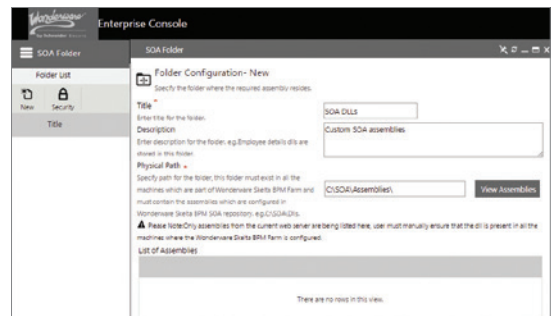
- Out-of-the-box reporting and activity monitoring views
- Associate workflows with BAM events
- Customizable Key Performance Indicators (KPIs)
- Performance Analysis
- Dashboard which highlights workflow status and workflow instances
- Proactive alerts of Business Exceptions and KPIs
- Built-in BAM Analyzer for Transaction and Execution
- BAM configuration in list context menu
- Configurable data points and KPIs for comprehensive reports.

### Electronic Signatures

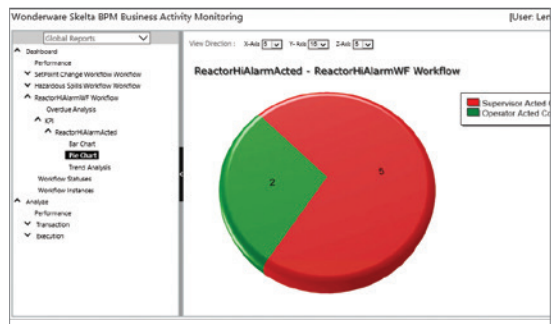
- Electronically validate the identity of the users
- Ensure regulatory compliance with electronic signatures
- Track multi-level requests through response collaboration



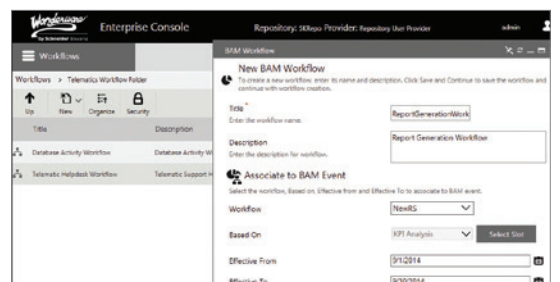
SAP Integration uses Microsoft LOB Adapter



SOA Repository



BAM and KPIs

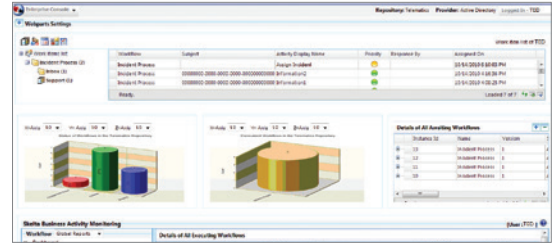


BAM Workflow

## Dashboard and Web parts

This feature allows you to enable Web parts and customize home screens. You can:

- Customize web parts based on the credentials of a specific user or role
- Customize the home screen based on need
- Increase the business productivity with customization

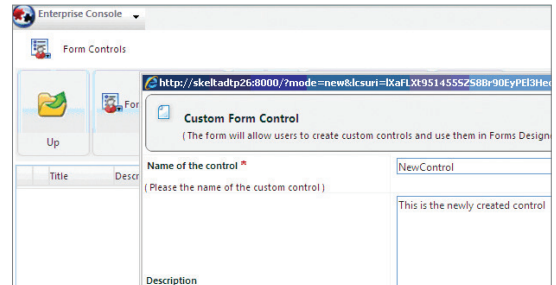


Dashboard and Web parts

## Custom Controls

The Custom Controls feature in Forms supports advanced Form features which can be created by the user:

- Customize Form features to specific business needs
- Blend custom controls with Wonderware Skelta BPM Forms Architecture

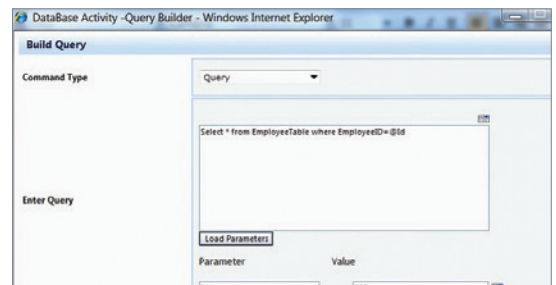


Custom Controls

## Database Activity

The database activity enables execution of queries, stored procedures and functions from the workflow. This activity enables you to:

- Establish connections with the database server
- Retrieve or update data in the database
- Get schemas of database tables according to a query



Database Activity

## Security

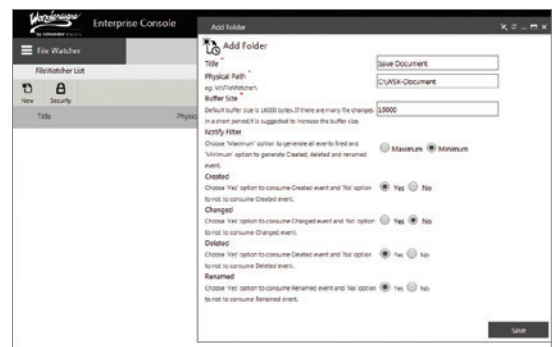
- Collaborate effectively during workflow creation
- Define user-based access rights for workflow design functions
- Leverage built-in workflows to collaborate during process and form design
- Define security at item, folder and other levels
- Comprehensive security for reporting and BAM
- Use SharePoint Roles/Users to define security inside



Security

## File Watcher

- Reliable file related events with special logic to eliminate false file events
- Bind File Events to processes
- Integrate paperless processes
- Associate Workflows with file watcher events
- Monitor a folder for different file events
- Access file details as XML variables inside workflow
- Move files from one location to another (Physical, SharePoint and FTP)



File Watcher

## Work Tasks

Wonderware Skelta BPM Work Tasks empower users who are on the move to stay connected with their mission critical business processes while ensuring the security of their interactions. Work Tasks for iOS and Windows tablet offers enhanced enterprise mobility and collaboration among stakeholders.



Benefits	Capabilities
<ul style="list-style-type: none"> <li>• Faster tasks execution and reduced delays, making critical processes move faster</li> <li>• Reduced process interruptions</li> <li>• Increased operational efficiency</li> <li>• Improved enterprise wide real-time collaboration</li> </ul>	<ul style="list-style-type: none"> <li>• Anywhere anytime, secure mobile access to critical business processes</li> <li>• Work Tasks push notifications and messages enable quick turnaround</li> <li>• Support for iOS and Windows mobile devices</li> <li>• Supports all process related actions such as initiate, view, act and search</li> </ul>

## Developer and OEM Edition-Benefits

- Rapidly deploy applications using embedded objects
- Reduced implementation times for faster time-to-market
- XML Interface for easy integration and data interchange with third-party applications
- Blocked output functionality
- Properties for synchronous and asynchronous execution
- Construct and modify rules within existing software using the simple click and drop interface
- Customize the entire user interface by changing simple HTML templates
- Connectivity with any database such as Oracle, MS SQL or Active Directory
- Allow end users to customize an embedded workflow
- Manage complex resource and organization calendar schedules
- Send Notifications/Alerts on email, SMS and via standard instant messengers

## Customer Testimonials

**“Servicing more than 500 customer projects valued at over \$500 billion across over 50 countries with over 70,000 users,** Coreworx customers rely on our extensive experience with major capital project best practices, and our proven track record of improving process performance throughout the entire project lifecycle.

Embedding Wonderware Skelta BPM software has been a key factor and has enabled us to turn industry best practices into automated solutions to **help our customers be more agile and efficient.**

Our customers’ successes depends on them receiving the right information, at the right time, and in the right context. The underlying Wonderware Skelta BPM software framework help us automate existing business practices so our customers can have increased visibility into mission critical business processes, and the ability to rapidly adapt to meet unique demands of every critical project.”

**- Erik Vander Ahe**  
SVP Operations and Development  
Coreworx Inc.

“We sought an embedded solution with a thin-client designer and finally found one in Wonderware Skelta BPM that actually **exceeded and continues to exceed our expectations.** More importantly than the technology, we have found an OEM partner who sees our success as their own success and this positive relationship with **Schneider Electric has enabled us to move farther and faster in the marketplace with confidence.**”

**- Harold Engstrom**  
CEO, Innovative Process Solutions, Inc.

“Wonderware Skelta BPM has an excellent visual component that allows **quick and easy design of workflows. It easily integrates** other steps into the workflow process. I could tell it was written by experienced programmers who know what they are doing.”

**- Greg Robinson**  
Marketspace Monitor Group

**“Wonderware Skelta BPM helped us achieve an ROI of 20% by identifying unmanaged process areas, automating and integrating them naturally in uncontrolled business situations largely affected by the global economic crisis existing today.”**

**- Astimen Fe,**  
MIS Manager, ICON+



## Awards and Accolades



For more information about Wonderware Skelta BPM Software, please contact your local Wonderware distributor or contact us directly at +1 678 306 4110 | [www.skelta.com](http://www.skelta.com)



### Schneider Electric Software

26561 Rancho Pkwy South, Lake Forest, CA 92630 Telephone: +1-(949) 727-3200 Fax: +1-(949) 727-3270 [software.schneider-electric.com](http://software.schneider-electric.com)

© 2015 Schneider Electric Software, LLC. All rights reserved.

PN WW-4231 Rev. 01/15