



## Summary

Wonderware Historian Client data analysis and reporting software places real-time and historical process data into the hands of the people most responsible for plant performance: operators, engineers and operations managers.

## Business Value

Wonderware Historian Client software delivers information stored in the Wonderware Historian and from other information sources found in today's manufacturing or industrial operations environment:

- Production Management information from your business systems to the plant floor
- Performance Management information from your assets and activities to your business systems.



# Wonderware Historian Client 2012 R2



## GAIN BETTER VISIBILITY INTO YOUR PROCESSES

Wonderware® Historian Client generates real-time and historical data charts and reports directly from the Wonderware Historian allowing operators, engineers and decision makers to quickly visualize what is happening during a production run, a batch or any industrial process.

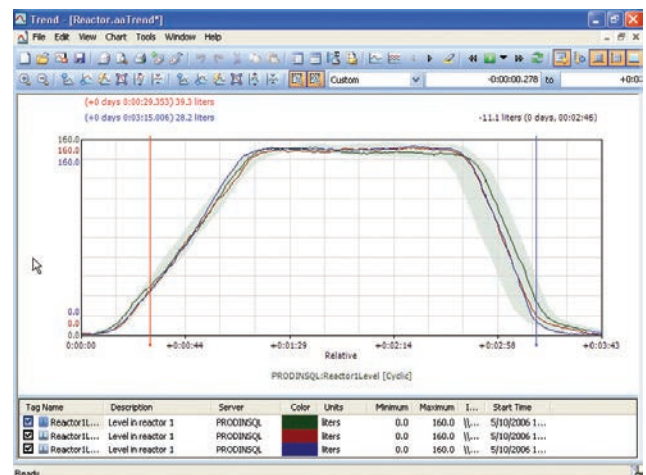
Wonderware Historian Client is versatile and open so data can be viewed, analyzed and consumed via a desktop application, web browsers or by external applications, such as Microsoft Office, Wonderware's InTouch® HMI or even custom clients.

## RICH DATA ANALYSIS AND REPORTING

The Historian Client's rich, desktop-based analysis and reporting experience gives you powerful ad hoc query capabilities, as well as preconfigured trending tools needed to drill down into data details to evaluate trends, find root causes, and determine the best solutions to critical process issues.

Plant IT personnel tasked with creating and maintaining production reports and regulatory reports can use Historian Client to pull important information out of the huge volume of plant process data stored in Wonderware Historian.

Historian Client enables you to easily and rapidly mine data stored in Historian and other SQL data sources. No prior knowledge of SQL is required since a simple tag browser is used to find and select individual tags or entire public or private tag groups. A wide range of standard query types are available.



## HISTORIAN CLIENT COMPONENTS

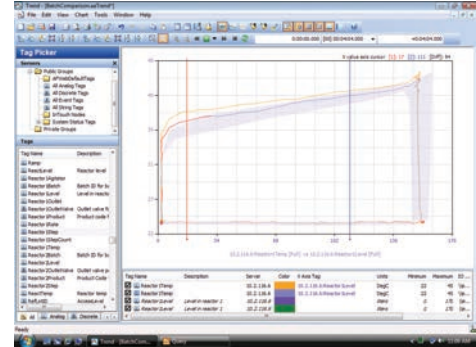
Wonderware Historian Client includes multiple applications designed to maximize the value of data stored in Wonderware Historian.

These applications give you access to plant and process data through easy-to-use interfaces. Historian Client can help plant workers quickly troubleshoot problems, study potential operational inefficiencies and eliminate the time-consuming process of locating data.

### Trend Client

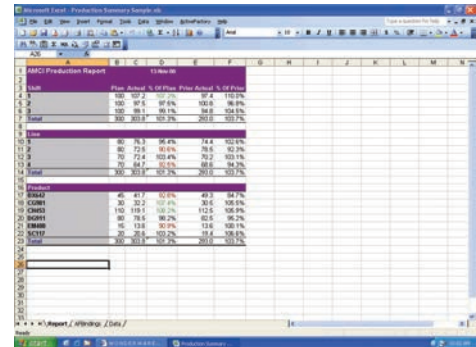
The Wonderware Historian Trend client is a powerful desktop data graphing tool. Providing a range of charting and formatting capabilities, it is designed to allow users to create highly informative data analysis charts for real-time and historical data trend analysis, faster troubleshooting and process improvement.

Multiple types of analysis displays and reports are available as standard, such as Trend charts, X-Y Scatter plots, Batch trend charts, including 'Golden Batch' comparison.



### Report Client

This add-on for Microsoft® Word enables users to create custom production reports using Wonderware Historian data and save/publish in standard document formats. The Report client can use the Wonderware Historian Query client to allow the creation of highly focused reports tailored to specific user requirements.



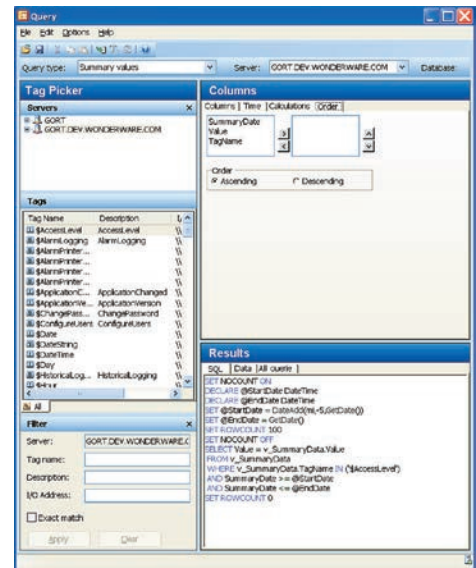
Tag Name	Value	Unit
100-107-A	100.00%	100.00%
100-107-B	100.00%	100.00%
100-107-C	100.00%	100.00%
100-107-D	100.00%	100.00%
100-107-E	100.00%	100.00%
100-107-F	100.00%	100.00%
100-107-G	100.00%	100.00%
100-107-H	100.00%	100.00%
100-107-I	100.00%	100.00%
100-107-J	100.00%	100.00%
100-107-K	100.00%	100.00%
100-107-L	100.00%	100.00%
100-107-M	100.00%	100.00%
100-107-N	100.00%	100.00%
100-107-O	100.00%	100.00%
100-107-P	100.00%	100.00%
100-107-Q	100.00%	100.00%
100-107-R	100.00%	100.00%
100-107-S	100.00%	100.00%
100-107-T	100.00%	100.00%
100-107-U	100.00%	100.00%
100-107-V	100.00%	100.00%
100-107-W	100.00%	100.00%
100-107-X	100.00%	100.00%
100-107-Y	100.00%	100.00%
100-107-Z	100.00%	100.00%

### Workbook Client

This Microsoft Excel add-on is designed to simplify the creation of process-data reports using Wonderware Historian data. Wonderware Historian Workbook reports can be published to the Wonderware Information Server portal for broad distribution across the plant, intranet or Internet.

### Query Client

This easy-to-use desktop tool for creating database queries removes the need for SQL expertise. Query can be used in tandem with the Wonderware Historian Trend, Workbook or Report clients. It can also be used as a standalone querying tool for the Wonderware Historian or any SQL-compliant database.



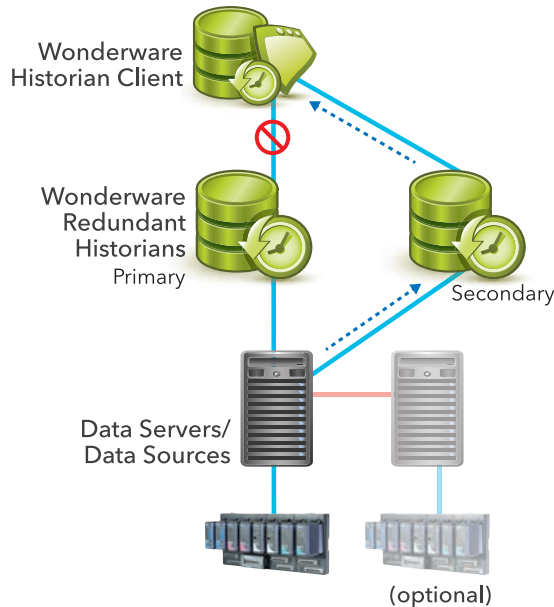
```
SQL: [Data All Query]
SET ACCOUNT ON
DECLARE @StartDate DateTime
DECLARE @EndDate DateTime
SET @StartDate = (DateAdd(mi,-5,@StartDate))
SET @EndDate = @EndDate
SET ROWCOUNT 100
SET ROWCOUNT OFF
SELECT * FROM v_SummaryData
WHERE v_SummaryData.TagName IN ('AccessLevel')
AND SummaryDate >= @StartDate
AND SummaryDate <= @EndDate
SET ROWCOUNT 0
```

### Web Reporting

Wonderware Historian Trends, Reports and Workbooks can be published via a simple menu selection to the Wonderware Information Server. Using Wonderware Information Server aggregates plant and business data into a powerful Web-based production and performance management solution.

## HIGH AVAILABILITY AND BUSINESS CONTINUITY

Wonderware Historian Client 2012 R2 can take full advantage of the new Wonderware Historian 2012 R2 Redundant Historian capabilities. Now, if the primary Historian goes off-line the Historian Client automatically switches the data source to the secondary Historian. This automatic switching of Historian data sources is a key new feature of Historian Client 2012 R2 and helps ensure high availability of your Historian Client process analysis tools even if your primary Historian is down. Once the primary Historian is back online Historian Client automatically switches back to the primary with no interruptions to the user.



*With redundant Historians, data continues to flow even if the primary Historian Server goes down*

## EXTENSIBILITY

To enable seamless integration within your enterprise applications, the Wonderware Historian Clients also have componentized objects which enable you to integrate the powerful analytical and visual capabilities of the suite within your own applications.

Wonderware Historian Client is built on ArcestrA® technology, which allows unprecedented scalability and functional richness in industrial applications. Using ArcestrA technology, system designers can build complete production and performance management solutions using the single, integrated development platform that ArcestrA delivers – saving time and development resources. Applications can start small and grow into a complete plant-wide or enterprise solution as requirements dictate or evolve.

### Client Control Objects

Invensys provides a powerful library of component-based .NET and ActiveX control versions of the Wonderware Historian Client, enabling extensibility options for customers wanting to build custom industrial applications. These client components also are able to be used with Wonderware HMI, InTouch and third-party container applications, such as Microsoft Internet Explorer and the Visual Studio development system.

### Toolkits

Wonderware Historian Client control objects are developed using .NET and C# software technology, enabling them to be seamlessly integrated into today's .NET-based industrial applications. A range of toolkit options are available to save you significant development time.

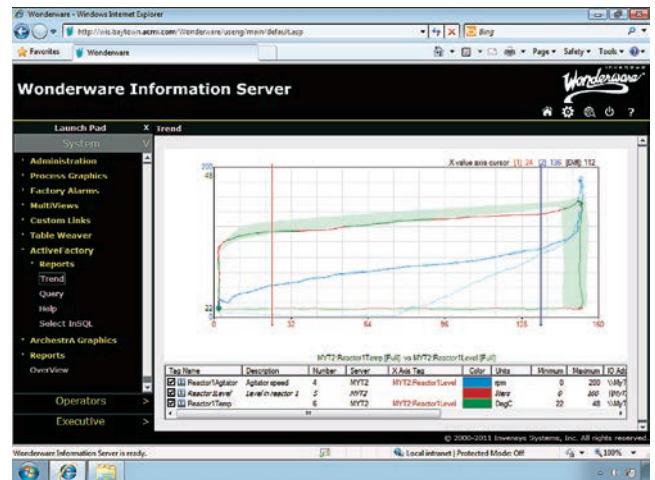
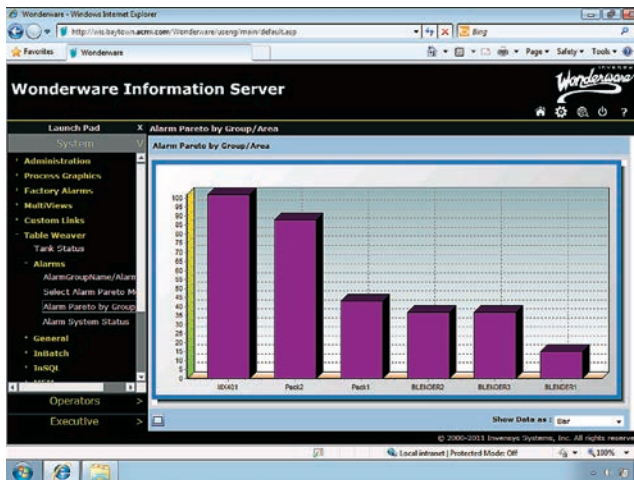
## WEB-BASED REPORT INTEGRATION

Reports and data charts from Wonderware Historian Client can be integrated with information from other Wonderware applications and made available over the Web using Wonderware Information Server.

This ensures the proper information can be made available to the right individuals wherever they are located. Using client components within Wonderware's Information Server delivers a rich and flexible portal experience.

Sample reporting solutions include:

- Table Weaver - dynamic, drill-through reports and data displays
- Wonderware Performance - OEE and equipment downtime reports and KPI dashboards
- Wonderware Operations - multiple reporting options including:
  - Production events and formula reporting (usage and setpoints)
  - Material consumption including comparisons of "plan vs. actual"
  - Consumption and genealogy of materials, equipment, personnel and production events related to a lot, batch or serial number
  - Complete traceability and genealogy reporting to help you comply with government regulations



## CUSTOMER SUPPORT AND SERVICES

The Invensys Customer FIRST Services Program makes it easy to receive the help you need when you need it and to receive the latest version of the Historian Client and associated Wonderware products. To learn more about this valuable program visit; [http://iom.invensys.com/EN/Pages/Services\\_MaintenanceandSupportServices.aspx](http://iom.invensys.com/EN/Pages/Services_MaintenanceandSupportServices.aspx)

**Learn more about Wonderware Historian Client 2012 R2. Contact your Wonderware distributor today!**



Invensys Operations Management • 10900 Equity Drive, Houston, TX 77041 • Tel: (713) 329-1600 • Fax: (713) 329-1700 • [iom.invensys.com](http://iom.invensys.com)

Invensys, the Invensys logo, ArchestrA, Avantis, Eurotherm, Foxboro, IMServ, InFusion, SimSci-Esscor, Skelta, Triconex, and Wonderware are trademarks of Invensys plc, its subsidiaries or affiliates. All other brands and product names may be the trademarks or service marks of their representative owners.

© 2012 Invensys Systems, Inc. All rights reserved. No part of the material protected by this copyright may be reproduced or utilized in any form or by any means, electronic or mechanical, including photocopying, recording, broadcasting, or by any information storage and retrieval system, without permission in writing from Invensys Systems, Inc.

Rel. 12/12 PN WW-4153